

Welcome to the World of PlayStation



Quick Start Guide

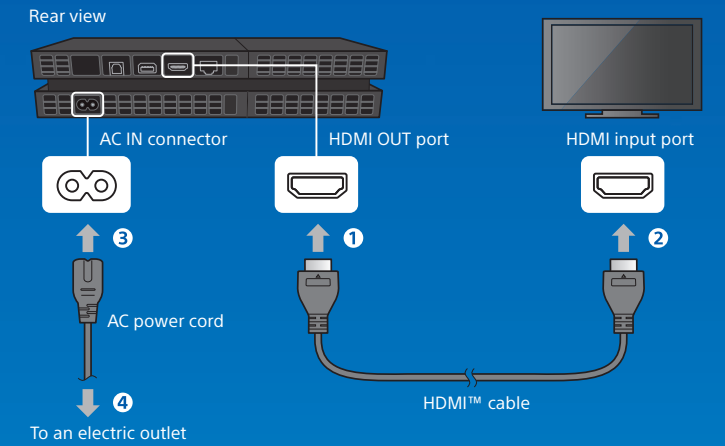
English

CUH-1206A / CUH-1207A

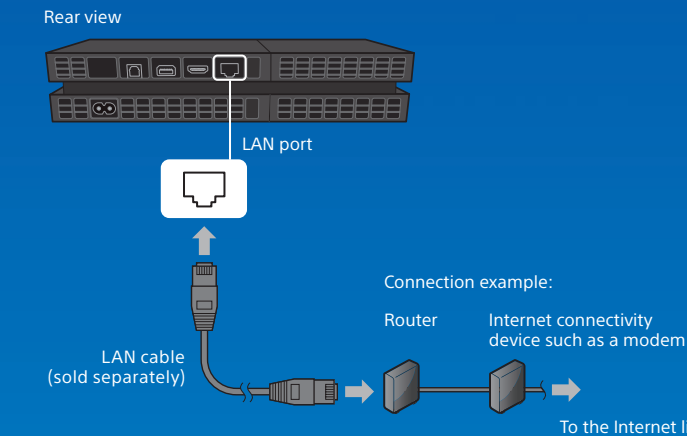
Getting started

1 Connect the PlayStation®4 system to a TV.

Connect the HDMI cable and the AC power cord in order, from 1 to 4.



2 For a wired connection to the Internet, connect a LAN cable (sold separately).



- When connecting to a network wirelessly (using Wi-Fi), do not connect an active LAN cable to the PS4™ system. A LAN cable connection is prioritized by the system.
- To fully enjoy PS4™ system features, an Internet connection is recommended.

3 Turn on the TV, and then set the TV input to HDMI.

4 Press the ⏻ (power) button of the PS4™ system to turn the system on.

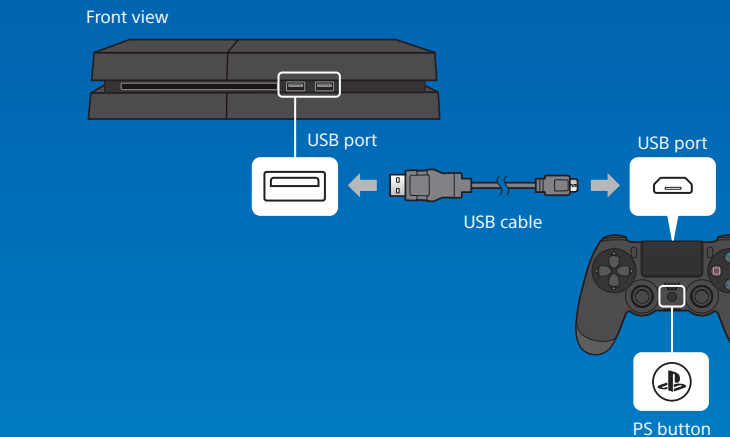
The power indicator blinks in **|** blue, and then lights up in **|** white.



If video is not displayed on the screen or video is not correctly displayed when the system is turned on (the power indicator lights up in **|** white), press the ⏻ (power) button for at least 7 seconds (until the system beeps a second time) to turn off the power, and then turn on the power again.

5 Connect the DUALSHOCK®4 wireless controller to the system using the USB cable, and then press the Ⓟ (PS) button.

The controller is registered (paired) when you connect it with the USB cable, and turns on when you press the Ⓟ (PS) button.



- Initial registration of the controller is necessary in some situations, such as when using the controller for the first time, or using the controller on another PS4™ system.
- After registration of the controller is complete, you can disconnect the USB cable and use the controller wirelessly.

6 Perform initial setup.

Set up an Internet connection, set the date and time, and adjust other settings. Follow the screens to adjust settings, and then select [Start Now] from the setup completion screen. If a system software update is available at the time you set up the Internet connection, the update file will automatically start downloading to the system.

Items that you set during the initial setup and items for which you selected [Set Up Later] or [Skip] can be adjusted any time from Ⓜ (Settings) in the function screen.

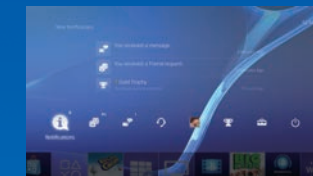


4-573-257-71(2)

© 2015 Sony Computer Entertainment Inc. Printed in China

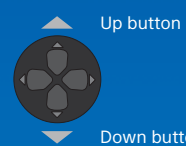
SONY

Using the screen



Function screen

A row of function items is displayed. You can do things such as check for new notifications and send messages to your Friends.



Up button

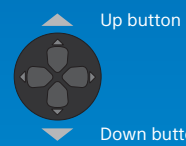
Down button



Home screen

Content area

The content that you have started is listed in most recent order from left to right.



Up button

Down button



Content info screen

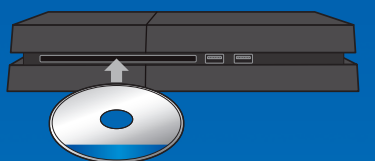
The latest information about the selected content is displayed.

Playing games

1 Insert a disc.

The game appears in the content area of the home screen.

Front view



2 Select the game.

The game starts.

Downloading games from PlayStation®Store (PlayStation®Store)

PlayStation®Store has a wide variety of content you can't get anywhere else, including games, free trial versions of the latest releases, and game add-ons that make the games you have even more fun to play. In some games, you can even start playing without waiting for their downloads to complete.

Sharing your gaming experience

By using online services, you can upload screenshots and video clips of gameplay from a game, and broadcast (stream) your gameplay. Press the SHARE button, and then follow the screens to use this feature.



SHARE button

Quitting a game

Press and hold the (PS) button, and then select [Close Application] on the screen that is displayed.

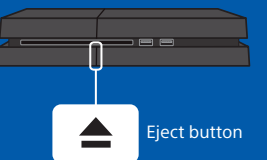
Returning to the home screen from a game

To return to the home screen without quitting a game, press the (PS) button. To resume playing the game, select it from the content area.

Removing a disc

Press the (eject) button.

Front view



Eject button

Sign in to PlayStation™Network

PlayStation™Network is an online service that lets you expand your enjoyment of your PS4™ system. When you sign in to PlayStation™Network, you can use a wide variety of features and services.

To sign in to PlayStation™Network, you must have a Sony Entertainment Network account and an Internet connection. Creating an account is free. You can also use an account on your PS4™ system that was created using another device, such as a PlayStation®3 system or a PlayStation®Vita system.

If you do not have an account

Select (Settings) > [PlayStation™Network/Account Management] > [Sign In to PlayStation™Network] from the function screen, and then follow the screens to create an account.

If you already have an account

Select (Settings) > [PlayStation™Network/Account Management] > [Sign In to PlayStation™Network] from the function screen, enter your sign-in ID and password, and then select [Sign In].

To create a sub account for users under a certain age, you must first create a master account for a parent or guardian.

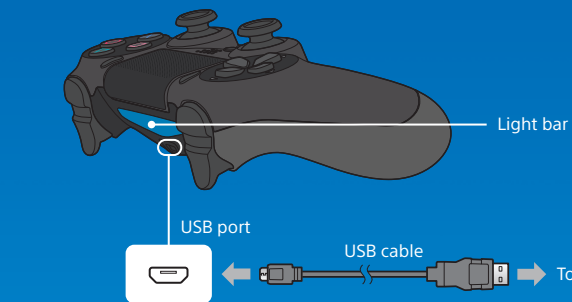
Using the controller

Charging

To use the controller wirelessly, the controller's battery must be charged. You can check the charge level of the battery on the screen that is displayed when you press and hold the (PS) button.

1 Turn on the PS4™ system (the power indicator lights up in white) or set it to rest mode (the power indicator lights up in orange).

2 Connect the controller to the PS4™ system using the USB cable.



Light bar

USB port

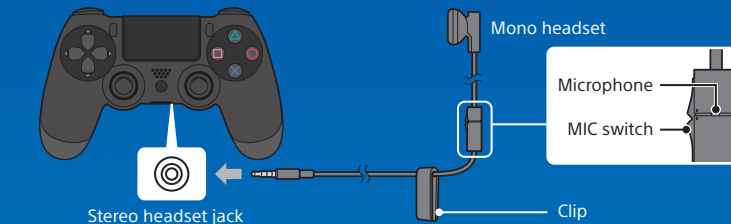
USB cable

To the PS4™ system

To charge while in rest mode, you must set a checkmark in (Settings) > [Power Save Settings] > [Set Functions Available in Rest Mode] > [Supply Power to USB Ports].

Using the mono headset

To use the mono headset, connect it to the controller. With the default setting, only chat audio is output from the headset.



Using multiple controllers

You can use up to 4 controllers at the same time. When you press the (PS) button on a controller for which registration has been completed, a color is assigned and the light bar lights up. The color that is assigned depends on the order in which users press the (PS) button on the controller. The first user is blue, the second is red, the third is green, and the fourth is pink.

Turning off the power

Caution

Only disconnect the plug of the AC power cord from the electric outlet when the power indicator is turned off. If you disconnect it while the power indicator is lit or blinking, data might be lost or corrupted, or the system might be damaged.

Entering rest mode

You can charge the controller from a USB port and remain signed in to PlayStation™Network while in rest mode. Select (Power) from the function screen, and then select [Enter Rest Mode]. The screen turns off, the power indicator blinks in white, and then the power indicator lights up in orange. To exit rest mode, press the (PS) button on the controller.

Turning off the power completely

Select (Power) from the function screen, and then select [Power Options] > [Turn Off PS4]. The screen turns off, the power indicator blinks in white, and then the power indicator turns off.

Understanding the power indicator

Lights up in white	Powered on
Lights up in orange	Rest mode
Turned off	Powered off

User's Guide

Select (Settings) > (User's Guide) from the function screen. This document contains explanations of how to use each function, how to perform settings, how long to allow for charging the controller, and other operations. You can also view the User's Guide from a computer or other device. manuals.playstation.net/document/

Safety Guide

This document contains information about how to safely use the PS4™ system, and information about specifications. It also contains product warranty terms. Be sure to read it before using the system.

PS4™, "PlayStation", "PS4", "DUALSHOCK" and PS are registered trademarks or trademarks of Sony Computer Entertainment Inc.

"SONY" and "PS" are registered trademarks of Sony Corporation. "Sony Entertainment Network" is a trademark of the same company.

The terms HDMI and HDMI High-Definition Multimedia Interface, and the HDMI Logo are trademarks or registered trademarks of HDMI Licensing LLC in the United States and other countries.

Design and specifications are subject to change without notice. Information about system functionality and images published in this document may vary from those for your system, depending on the system software version in use. Also, the illustrations and screen images used in this guide may vary from the actual product.